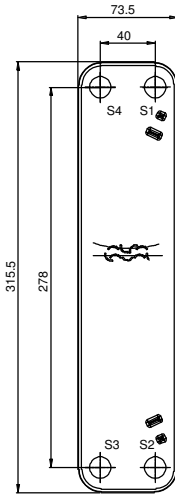
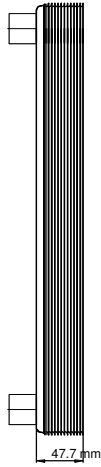
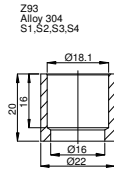
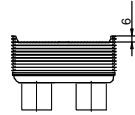


Note that all unique customer requirements (i.e tolerance) need to be verified thru Alfa Laval.



T1 T2 T3 T4 locations on back side correspond to S1 S2 S3 S4 on front side



HEATING SURFACE  
NETWEIGHT 1.83 kg  
OPERATING WEIGHT

PLATE MATERIAL Alloy 316  
PLATE GROUPING 1\*8H/1\*9H

TOTAL LENGTH 67.7  
TOTAL WIDTH 73.5  
TOTAL HEIGHT 315.5

ALL DIMENSIONS IN MILLIMETERS

| MEDIA | INLET | TEMP. | OUTLET | TEMP. | FLOW RATE | PRESSURE DROP | LIQUID VOL. |
|-------|-------|-------|--------|-------|-----------|---------------|-------------|
|       |       |       |        |       |           |               | 0.3 dm³     |
|       |       |       |        |       |           |               | 0.34 dm³    |

|                          |      |        |                                   |            |          |              |
|--------------------------|------|--------|-----------------------------------|------------|----------|--------------|
| SUPPLIER                 | REF. | MP NO. | PLATE HEAT EXCHANGER              |            |          |              |
| AGENT/REF.               |      |        | <h1>ACH18-18H-F</h1> <h2>PED</h2> |            |          |              |
| CUSTOMER NAME / REF. NO. |      |        |                                   |            | ITEM ID. | 32871 6021 3 |
| SIGN.                    |      |        | DATE                              | 2015-10-23 | REV No.  | 0            |